



The connection to perfection

ECS Electronics UK  
20 Speedwell Close  
Huntington  
Chester, CH3 6DX  
United Kingdom  
Tel.: +44 (0) 7590 564639  
Email: [uksales@ecs-electronics.com](mailto:uksales@ecs-electronics.com)  
[www.ecs-electronicsuk.co.uk](http://www.ecs-electronicsuk.co.uk)



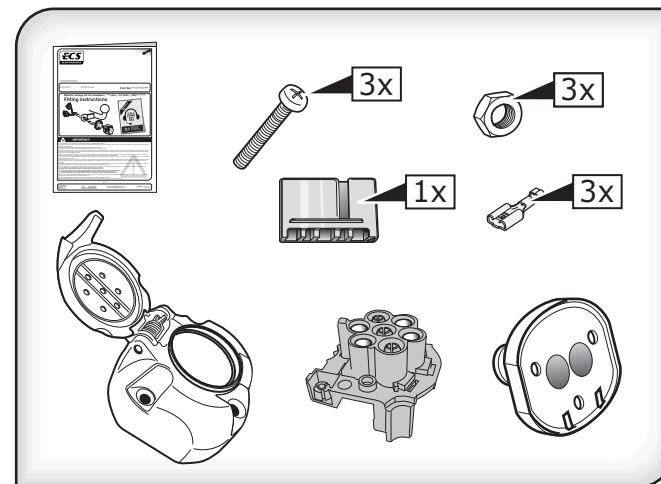
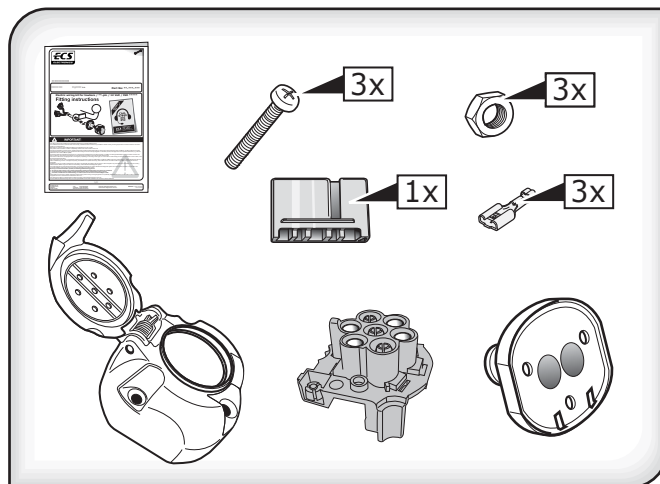
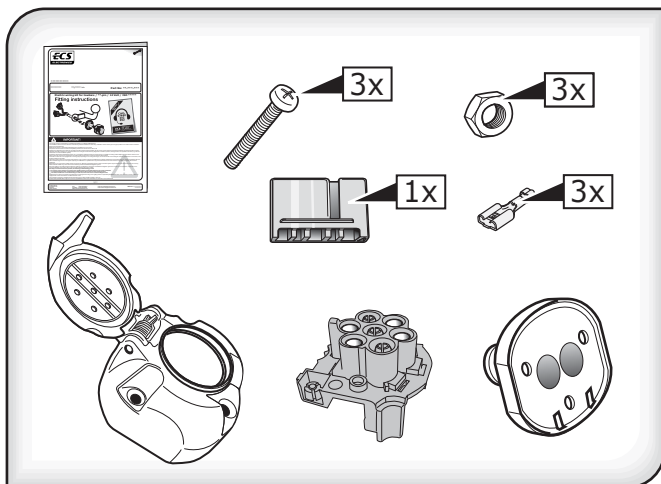
The connection to perfection

ECS Electronics UK  
20 Speedwell Close  
Huntington  
Chester, CH3 6DX  
United Kingdom  
Tel.: +44 (0) 7590 564639  
Email: [uksales@ecs-electronics.com](mailto:uksales@ecs-electronics.com)  
[www.ecs-electronicsuk.co.uk](http://www.ecs-electronicsuk.co.uk)



The connection to perfection

ECS Electronics UK  
20 Speedwell Close  
Huntington  
Chester, CH3 6DX  
United Kingdom  
Tel.: +44 (0) 7590 564639  
Email: [uksales@ecs-electronics.com](mailto:uksales@ecs-electronics.com)  
[www.ecs-electronicsuk.co.uk](http://www.ecs-electronicsuk.co.uk)



7 pin ISO socket with screw connection, 3 pin water-tight  
Cherry micro right side switch and mounting parts.  
According to ISO 1724

**SP-043-ZZU**

7 pin ISO socket with screw connection, 3 pin water-tight  
Cherry micro right side switch and mounting parts.  
According to ISO 1724

**SP-043-ZZU**

7 pin ISO socket with screw connection, 3 pin water-tight  
Cherry micro right side switch and mounting parts.  
According to ISO 1724

**SP-043-ZZU**